

Time-Lapse Embryo Monitoring System

GEN-TL6™



IVF Gen

Contribution 2 next Generation

GEN TL6



6x

Chamber



individual
Gas on/off

Top

Double
Heating

Bottom

Camera



High
Resolution

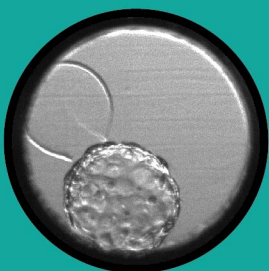
Filter

Alert

USB



Log
Data



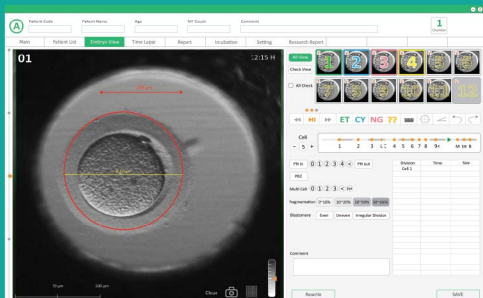
GEN TL6



Specifications

| | |
|----------------------|---|
| Product | GEN TL6™ (Time-Lapse) |
| Dimensions(WxDxH) | 780 x 465 x 270mm |
| Chambers | 6 |
| Dishes per chamber | i-well Dish(12 Micro-well) |
| Display | 7 inches Touch Monitor |
| Temperature range | 20~45℃ |
| Temperature accuracy | 0,1℃ |
| Software | iEM Vewer 24" Monitor |
| Gas supply | Premixed gas, Typically CO ₂ 5% / O ₂ 5% / N ₂ 90% |
| Log data | USB backup port |
| HEPA Filter | Remove 99,995% of all airborne particles down to 0.3µm |
| VOC Filter | Recommended to use 3 months up to 6 months |
| Power | 110V / 220V(50~60Hz) |
| Weight | 60Kg |
| Options | Stacking frame UPS System |

Specifications are subject to change without notice.





IVF Gen

Contribution 2 next Generation

IVF GEN Australia- Phone : +61 413 665 905

Email : info@ivfgen.com, ivfgen@gmail.com, Website : www.ivfgen.com