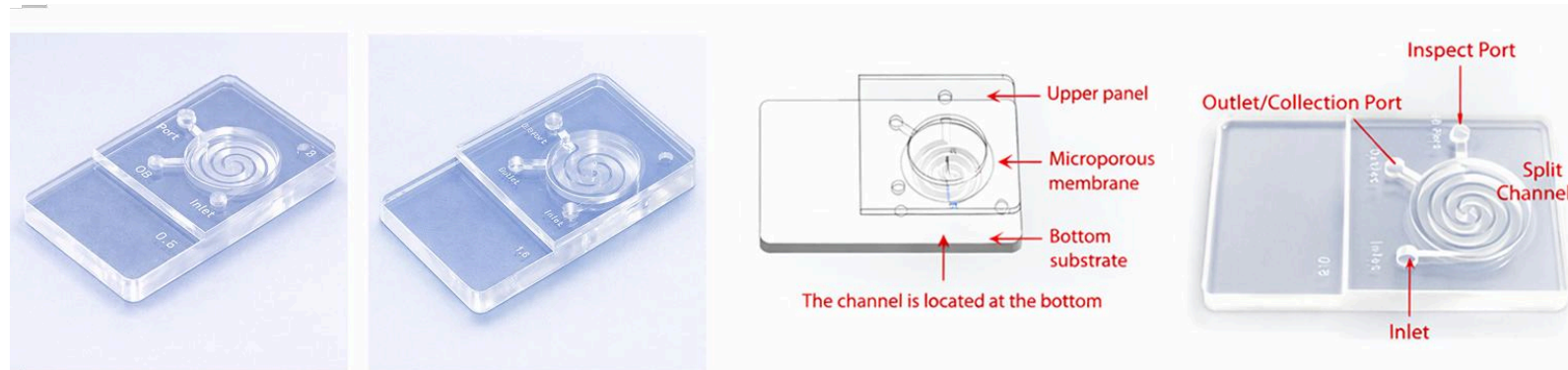


# IVF Gen-HiMot (Sperm Sorting Device)™



## Intended Use:

IVF Gen's HiMot is designed to use in IVF laboratories to select highly motile & healthy sperm from semen for further applications In Vitro Fertilization (IVF), Intra cytoplasmic sperm injection (ICSI) & Intrauterine Insemination (IUI) treatments.

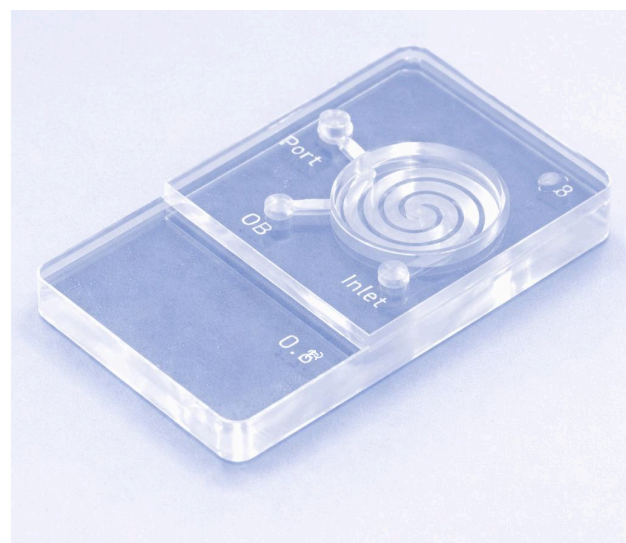
## Product Advantages:

- HiMot helps to optimize sperm separation in simple way.
- It's easy to adopt with minimal staff training, with simple & standardised procedures it helps embryologist quickly achieve optimal outcome.
- to traditional sperm selection methods, this device offers a simpler & faster approach of selecting sperm with higher motility, better morphology & with lower DNA fragmentation.
- HiMot requires fewer movements per sample which could help to minimize the risk of mismatch.
- It helps to standardise the workflow in lab with significant time savings over traditional methods like density gradient & swim-up.



## Models & Specifications:

Model	Upper Panel (mm)	Bottom Substrate (mm)	Channel Depth (mm)	Channel Width (mm)
GEN HM-08	50x45x2	75x50x4	3	2
GEN HM-16	50x45x2	75x50x5	4	3



GEN HM-08



GEN HM-16

## Structural Composition:

IVF Gen's HiMot consists of three layers- a bottom substrate, a microporous membrane and an upper panel, which are stacked and vacuum laminated.

## Packing Specifications:

1 Piece per Pack, 10 Pieces per Box

## Storage & Transportation:

Store in a cool, ventilated and clean indoor environment with a temperature of 5°C to 30°C and relative humidity of 65% ± 20% RH.



## Instruction for use:

- Remove the product from its individual packaging to use (do not use if its damaged).
- Use a 1 ml syringe to draw an appropriate amount of liquified semen and inject it through the inlet until the semen is visible at the observation port. Stop injecting the syringe at this point.
- Use a new 1ml syringe to draw 1ml gamete solution or sperm preparation media and add the culture medium to the upper chamber until the solution covers the membrane surface.
- Transfer the HiMot to 37C incubator and incubate for 30 minutes.
- Use 1 ml syringe to collect the culture medium containing the selected sperm from the collection port or membrane surface for subsequent procedures.

